

March 1, 2006

Gregory A. Danneffel, P.E.
Water Division
Kalamazoo District Supervisor
Michigan Department of Environmental Quality
7953 Adobe Road
Kalamazoo, Michigan 49009

RE: 2005 Annual Report Submittal for the Kalamazoo River/Lake Allegan Watershed
Cooperative Agreement for the Reduction of Phosphorus Loading

Dear Mr. Danneffel:

On behalf of the signatories of the Kalamazoo River/Lake Allegan Watershed Cooperative Agreement for the Reduction of Phosphorus Loading (hereafter known as the "Cooperative Agreement"), this report is being submitted as required in item 7 of the Cooperative Agreement. The required six (6) elements are addressed in Attachment 1. The original Implementation Plan was formally submitted on August 29, 2002 to the Michigan Department of Environmental Quality and to Region 5 of the United States Environmental Protection Agency.

This is the fifth annual Cooperative Agreement report and it outlines the activities conducted by the Point Source (PS) Group in 2005. The members of this group have been meeting and actively involved in the development and implementation of a phosphorus reduction strategy for the watershed since 1998. The PS Group agreed to meet at least twice per year once in the spring and again in the fall, as specified in the Cooperative Agreement and Implementation Plan. PS Group meetings were held on March 16 and October 26, 2005. A summary of the meetings can be found in Attachment 1 and the list of attendees in Attachment 3.

The PS Group successfully met the total maximum daily load (TMDL) goals for point source phosphorus discharges in 2005 with the exception of September. Please note that the PS Group met the compliance goals for the first five months and exceeded the sixth month by 574 lbs during the time frame that the TMDL voluntary limits were in place. During the six month TMDL timeframe the PS Group discharged a total of 32,833 pounds of the allowable 46,200 pounds TMDL goal. The majority of the PS Group were able to meet their discharge goals by: enhancing their chemical treatment procedures; maintaining constant communication with indirect phosphorus dischargers; dedicated staff efforts; and, through financial support of governing boards and ratepayers. The

results of their efforts are summarized in Attachment 2 and can also be found on www.kalamazooriver.net under the Point Source database tracking system.

Please consider this a full and complete submittal of the annual report by the Cooperative Agreement signatories. Please call me at (269)-337-8711, if you have any questions regarding this submittal.

Respectfully submitted by:

Bruce E. Merchant
Acting Public Services Managing Director
City of Kalamazoo
On behalf of the Cooperative Agreement Signatories

ATTACHMENT 1

Summary of six (6) Key Elements for TMDL Annual Report

1. Summaries of the Semi-Annual Meetings.

The meetings held on March 16 and October 26, 2005 were well attended by the Point Source Group members. Key issues discussed included: TMDL goals for 2006; Funding for Data Tracking; Opportunities for involvement with the various committees to assist with reducing non-point source phosphorus discharges as outlined in the implementation plans; Discussed Lake Allegan Carp Derby; Kalamazoo River Sampling for phosphorus; Reviewed TMDL data for 2005; NPDES permit renewals; Goals and issues for 2006; Sustainability of the overall Kalamazoo River Watershed group after MSU's contract runs out in December 2006; October 7, 2005 Kalamazoo River Public Forum; River Clean-up summation for 2005; and election of New Officers for the TMDL Implementation Group and the TMDL PS Group.

2. Progress made on each item identified in the implementation plans.

The majority of the Point Source Group continued with its efforts to provide assistance, resources and coordination of local efforts to reduce phosphorus to the Kalamazoo River Watershed. The Point Source Group was actively involved in the various committees created to carry out the implementation plan goals. The Group continued to provide financial/or in-kind service assistance to develop a non-point source-loading model; participated in the monitoring in the Kalamazoo River watershed; provided analytical and sampling resources; initiated efforts to address municipal storm water discharges in their communities; were involved in Public outreach programs and provide financial assistance/or in-kind services for water quality monitoring. The Point Source Group also voluntarily participated in the use and refinement of the web-based point source tracking system found at www.kalamazooriver.net.

3. Changes in the implementation plans in response to new challenges

The group focused on the formation of an Umbrella Group that would sustain the multiple Kalamazoo River Watershed Water Quality groups and facilitate the various activities of the groups to resolve current water quality issues and prevent future water quality issues. They participated in organizing a Public Kalamazoo River Forum on October 7, 2005. The Forum was held to bring together all

individuals and organizations that had a vested interest in Kalamazoo River Watersheds future health, see Attachment 7 for more information on the Forum. The PS Group actively sought new members to work on the various committees formed to meet the goals and objectives outlined in the implementation plan.

4. Local Success in Phosphorus Control.

The success of the Point Source Group is evident in the continued reduction of total phosphorus loadings to the Kalamazoo River during the April through September timeframe (13,367 pounds in 2005) and the additional reduction that Point Source Group members have fostered throughout the year. The Point Sources and non-point sources completed scheduled stream bank restoration projects in 2005; various stormwater management projects; and dedicated many man-hours to various committees, activities, educational institutions and projects promoting water quality watershed objectives. See Attachment 4, for summaries submitted by various PS discharges that detail their various projects, phosphorus loadings and activities.

5. Summary of the Point Source phosphorus effluent data and control methods.

See Attachment 2 for a summary of the Point Source Groups total 2005 phosphorus loading to the Kalamazoo River and the report prepared by Kieser & associates on the Kalamazoo River/Lake Allegan TMDL Point Source Phosphorus Load Analysis: 1998-2005. Individual Point Source effluent data can be accessed on www.kalamazooriver.net. The Major control methods continue to be chemical in nature. Most facilities have optimized operational techniques to meet/or exceed the phosphorus discharge goals.

6. Summary of any locally derived watershed monitoring data, including trend data, as implementation proceeds.

The www.kalamazooriver.net website contains much of the up to date watershed monitoring data and trend analysis. Attachment 5 contains a copy of the capstone report on the Kalamazoo River Watershed Phosphorus reduction over the last five years. The MDEQ's presented data conducted on Lake Allegan at our 2004 December TMDL quarterly meeting that indicated that the ecosystem and nutrient levels were progressing in the desired direction. The MDEQ summation was replicated in the 2005 MSU study conducted on the river. The data from the MDEQ's study can be found on the website under Kalamazoo River TMDL/Lake Allegan\Kalamazoo River Monitoring Data. The MSU study can be found in Attachment 6.

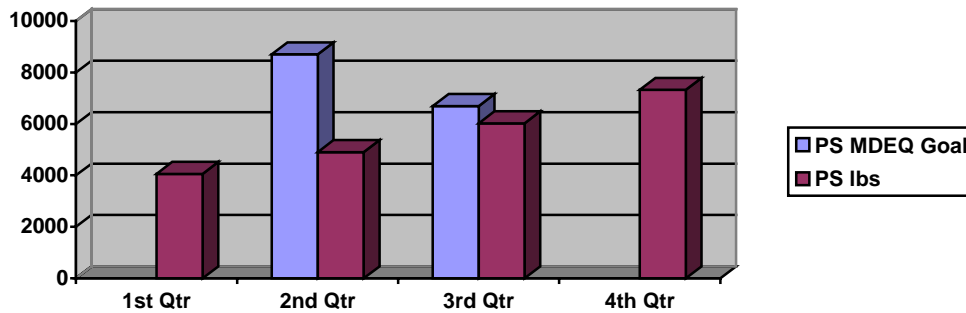
ATTACHMENT 2

ATTACHMENT 2

Summary of Total Phosphorus Loadings for Point Source Signatories in 2005.

Month	Total Loading (pounds)					Total Loading Goal
	<u>2001</u>	<u>2002</u>	<u>2003</u>	<u>2004</u>	<u>2005</u>	
January		5538	6666	3878	4,189	--
February		4179	7114	3497	3,832	--
March		4029	7578	3932	4,191	--
April	4609	4146	6369	4852	4,521	8,700
May	5768	4776	6086	6053	5,238	8,700
June	4757	4508	5791	5088	4,983	8,700
July	8021	4681	5560	5541	5,363	6,700
August	5554	6033	5291	4502	5,454	6,700
September	6393	5677	5575	4356	7,274	6,700
October	5128	6859	6147	4680	7,893	--
November	5562	7703	6420	4754	7,582	--
December	5889	8873	6806	4855	6,494	--
Facilities	17	27	27	30	26	

2005 Point Source Average Phosphorus Discharges in pounds verse Point Source Kalamazoo River/Lake Allegan Total Phosphorus Goal for Point Sources.



2001-2005 Point Source Average Phosphorus Discharges in pounds verse Point Source Kalamazoo River/Lake Allegan Total Phosphorus Goal for Point Sources.

