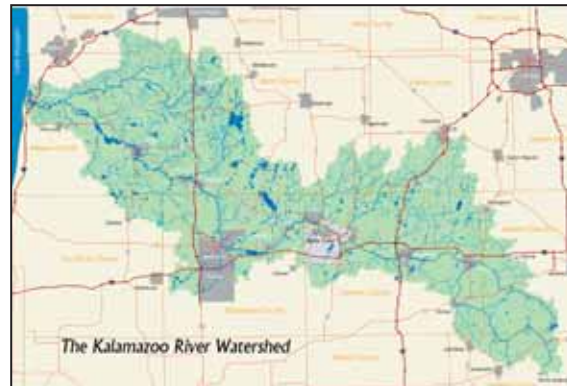


MSU Kellogg Biological Station
Land and Water Program
3700 E. Gull Lake Drive
Hickory Corners MI 49060

The Kalamazoo River Watershed: An Asset Connecting Our Communities

**Friday,
October 7, 2005
8 a.m. to 4 p.m.**

**McCamly Plaza Hotel
Battle Creek, Michigan**



A public forum to
learn about this shared vital
resource and connect with the
people and organizations that
work on its behalf.

Kalamazoo River Watershed

The Kalamazoo River Watershed (KRW) is one of Michigan's major river systems. It drains approximately 2,020 square miles of land from 10 counties and flows into Lake Michigan, near Saugatuck. The watershed contains 1,560 total miles of rivers and streams, with the Kalamazoo River mainstream being 180 miles long (Michigan's fourth longest). Once known for its outstanding scenery, boating and smallmouth bass fishing, the 20th Century took its toll on the river through pollution from industry, municipalities, agriculture, residential development and other sources. Also, unplanned and misguided land uses, coupled with loss of connected open space, is resulting in "urban sprawl" problems, including loss of wildlife habitat and impacts on ground and surface water quality.

The recent past has seen significant improvements in how lands and waters within the watershed are being used, along with a revitalization of its resources. A large number of committed communities, businesses and citizen groups are undertaking initiatives and programs to protect and enhance the critical resources of our watershed.

The primary goal of the forum is to better connect stakeholders across the KRW so that they can be more effective in their resource protection and education efforts. It is intended to bring together these groups to work toward common goals to restore, preserve and enhance the watershed. Protection and enhancement of the KRW is important because of its checkered past and its importance to the health, economy, recreation and tourism opportunities of those living, working and playing in the area.

**MICHIGAN STATE
UNIVERSITY
EXTENSION**

Agenda

- 8-9 a.m. **Registration and display viewing**
- 9 a.m. **Welcome and background**
Past problems and recent successes
- 10 a.m. **Concurrent sessions I**
 - Water use/groundwater/wellhead protection
 - Trailways/greenways/tourism/economics
 - Phosphorous TMDL/Phase II stormwater
 - Land use/sustainable growth/low impact development
 - Toxics/PCBs/Superfund
 - Biological surveys/watershed reports
- 11 a.m. **Concurrent sessions II**
(same as Concurrent sessions I)
- noon **Lunch and keynote address**
Mr. Dave Dempsey
- 1:30 p.m. **Visioning for the watershed**
What do we want, where do we go, and how do we get there?
- 3:45 p.m. **Realizing the vision**
Mr. Dave Dempsey
- 4:00 p.m. **Adjourn**

Keynote speaker

Dave Dempsey is a statewide, regional and national expert in water policy. He has served on state and regional commissions and boards by appointment of President Bill Clinton and Michigan Governor Jennifer Granholm. For seven years he was Governor James Blanchard's environmental advisor. He currently is Great Lakes policy advisor for the national organization Clean Water Action and policy consultant to the Michigan Environmental Council. He is the author of two critically acclaimed books on Michigan and the Great Lakes: *Ruin and Recovery: Michigan's Rise as a Conservation Leader*, and *On the Brink: The Great Lakes in the 21st Century*. He is currently working on a biography of William G. Milliken, Michigan's longest-serving governor and a champion of the environment.

Forum benefits

This forum will create an opportunity for stakeholders across the KRW to come together to learn about our shared vital resource and connect with the people and organizations that work on its behalf. Participating stakeholders include all levels of government, non-profit entities, existing sub-watershed projects, land conservancies, user groups, educational institutions and initiatives, community/lake/river associations, industry, user and professional groups, Indian nations, philanthropic entities and interested citizens.

- ◆ Participants will meet, network, share successes and look for opportunities to coordinate and collaborate.
- ◆ Participants will gain perspective on their place in the KRW and have an opportunity to forge a watershed-wide identity to enhance their efforts.
- ◆ Individual and organizational capacity building will occur through educational breakout sessions and a keynote speech focused on issues and trends of common concern across the watershed.
- ◆ A facilitated work session will focus on the future to identify common issues, concerns and gaps; develop an action agenda; and start organizing for action.

Anticipated outcomes

- ◆ Participants will leave this event with a new sense of identity with the larger KRW.
- ◆ Participants will better see how their water-related efforts fit into the totality of interests and efforts in the KRW and how they can better work together to protect our shared water resources.
- ◆ Participants will be provided with a resource directory of stakeholders and their water-related activities and responsibilities. They will be encouraged to use the forum experience and directory to connect with others, and look for future opportunities to coordinate, cooperate or collaborate for greater effectiveness.
- ◆ Participants will have access to timely new information, ideas and trends that can enhance their watershed-related efforts.
- ◆ Participants will jointly identify watershed-wide priorities, form an agenda for action, and volunteer for roles in the next action steps.
- ◆ Citizens and organizations will come together on a watershed basis to move swiftly and surely toward achieving common identified watershed goals.

Map/directions



From I-94 take the Downtown Battle Creek exit 98B (M-66). At the first traffic signal, turn left (Hamblin Ave.), and continue .2 miles. McCamly Plaza Hotel is on the right-hand side. Parking is available in the parking ramp on the corner of Hamblin Ave. and McCamly St., just past the hotel.

Registration form

Registration fee: \$20
(includes lunch, snacks and handout materials)

Name _____

Affiliation _____

Address _____

City _____ Zip _____

Day phone _____

Email _____

Registration deadline: Sept. 30

Accommodations for persons with disabilities may be requested by calling the Land and Water Program office at 269-671-2412, ext. 223 or 1-800-521-2619, ext. 223 by Sept. 23 to ensure sufficient time to make arrangements. Requests received after this date will be met when possible.

Make checks payable to MSU

Amount enclosed: \$ _____

Please return to:

KRW Forum
Kellogg Biological Station
Land and Water Program
3700 E. Gull Lake Drive
Hickory Corners, MI 49060

MSU Extension programs and materials are open to all without regard to race, color, national origin, gender, religion, age, disability, political beliefs, sexual orientation, marital status or family status.

Forum partners

- Allegan Conservation District ◆ Allegan County Parks, Recreation & Tourism ◆ Calhoun Conservation District
Calhoun County Community Development ◆ City of Battle Creek ◆ City of Kalamazoo ◆ City of Marshall
Four-Township Water Resources Council ◆ Geum Services Inc. ◆ Gun Lake Tribe
Kalamazoo College ◆ Kalamazoo Conservation District ◆ Kalamazoo Environmental Council
Kalamazoo River Protection Association ◆ Kalamazoo River Watershed Council
Kalamazoo River/Lake Allegan Watershed Phosphorus Reduction Committee
Kalamazoo Valley Chapter of Trout Unlimited ◆ Kieser & Associates
Menasha Corporation ◆ Michigan Department of Environmental Quality
Michigan Department of Natural Resources ◆ Michigan Heritage Water Trails
Michigan State University Extension ◆ MSU Kellogg Biological Station
National Park Service Rivers & Trails Program ◆ Pfizer Inc ◆ Potawatomi RC&D Council
Prudential West Michigan Realtors ◆ Sauk Trails RC&D Council
The Forum for Greater Kalamazoo ◆ USDA Natural Resources Conservation Service
Western Michigan University ◆ W. K. Kellogg Foundation