

**AXTELL CREEK**  
**Streambank Planting Recommendations**  
**February 15, 2005**

**Plant requirements:**

- Tolerant of fluctuating water levels
- Native to Kalamazoo area
- Lower stature
- Deeper root system to aid in bank stabilization

**Shrub species:**

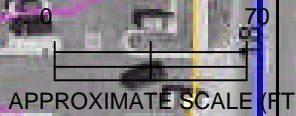
*Cephalanthus occidentalis* (Buttonbush)  
*Cornus amomum* (Silky dogwood)  
*Cornus stolonifera* (Red-osier dogwood)  
*Lindera benzoin* (Spicebush)  
*Salix exigua* (Sandbar willow)  
*Sambucus canadensis* (Elderberry)  
*Spirea alba* (Meadowsweet)

**Forbs/Grasses:**

*Acorus calamus* (Sweet flag)  
*Carex aquatilis* (Water sedge)  
*Carex atherodes* (Slough sedge)  
*Carex bebbii* (Bebb's sedge)  
*Carex prairea* (Prairie sedge)  
*Eleocharis smallii* (Creeping spikerush)  
*Glyceria borealis* (Northern manna grass)  
*Juncus tenuis* (Path rush)  
*Lysimachia ciliata* (Fringed loosestrife)  
*Lysimachia thyrsoflora* (Tufted loosestrife)  
*Scirpus acutus* (Hardstem bulrush)  
*Scirpus atrovirens* (Dark green bulrush)  
*Scirpus fluviatilis* (River bulrush)  
*Thalictrum dasycarpum* (Tall meadow rue)  
*Verbena hastata* (Blue vervain)

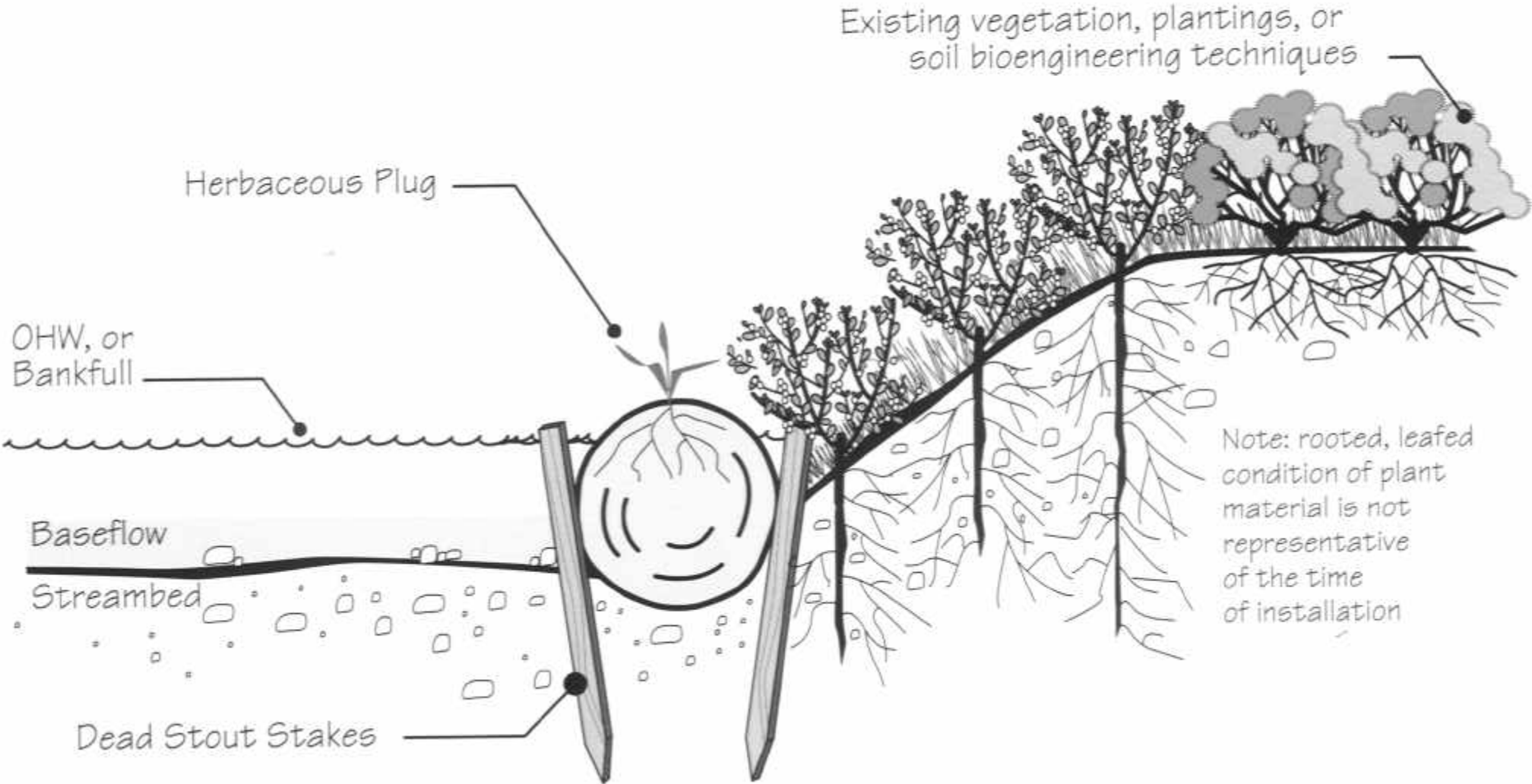


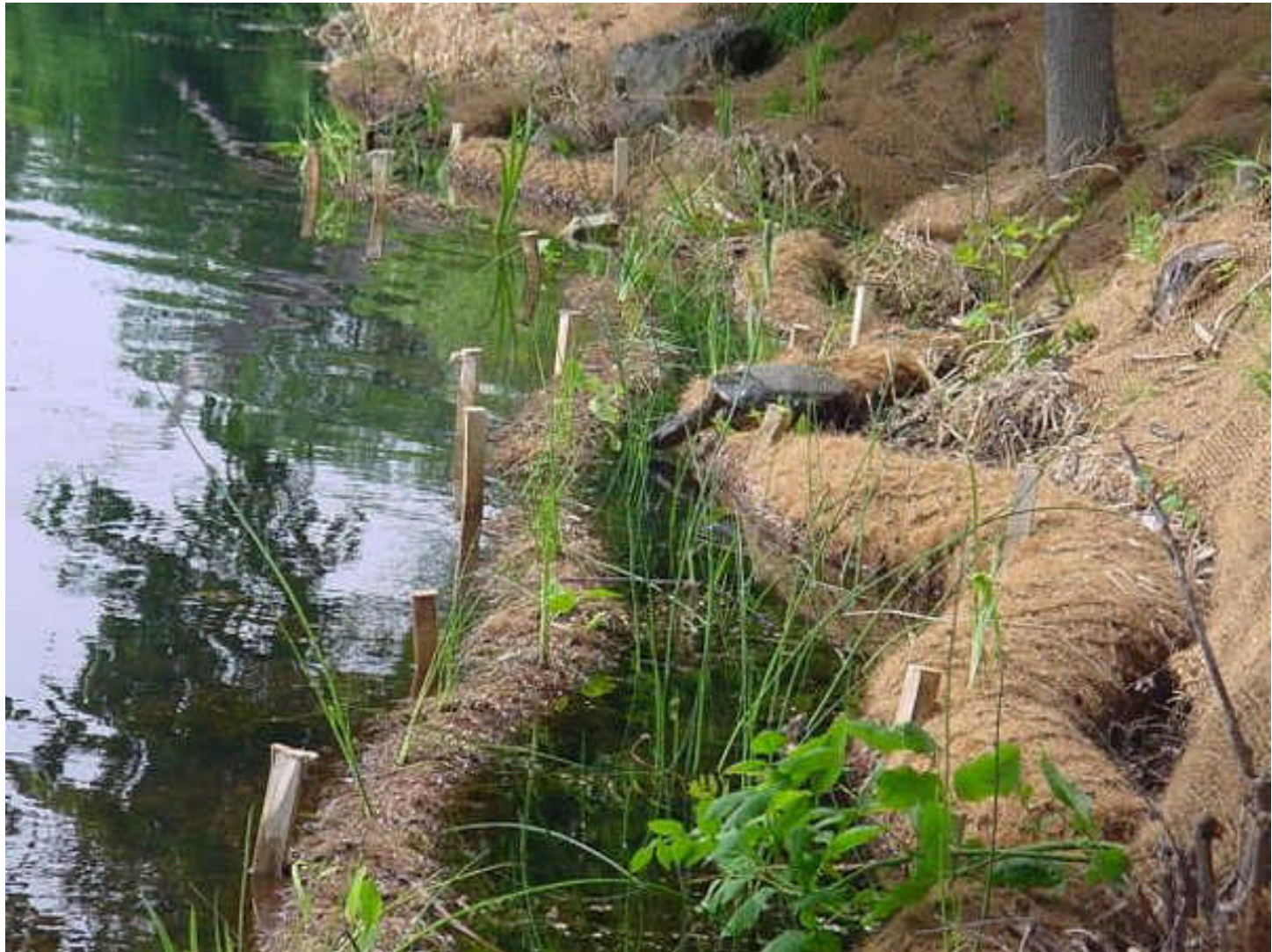
S Westledge Ave



# COCONUT FIBER ROLL

(Not to scale)







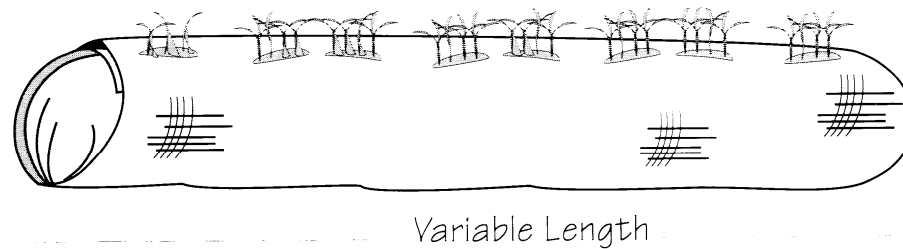
## WRAPPED PLANT ROLL

(Not to scale)

Two methods of construction are illustrated.

### EXAMPLE 1

The plants are wrapped in burlap or coconut fiber mat. Slits are cut along the top, and the leafy portions of the plants are pulled through.

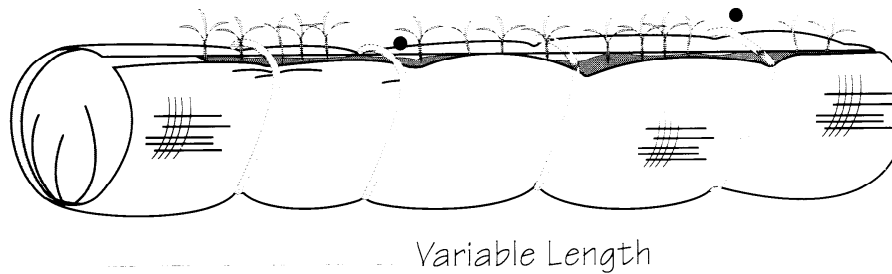


1.5" Gap in Roll for Plant Growth

Biodegradable Twine

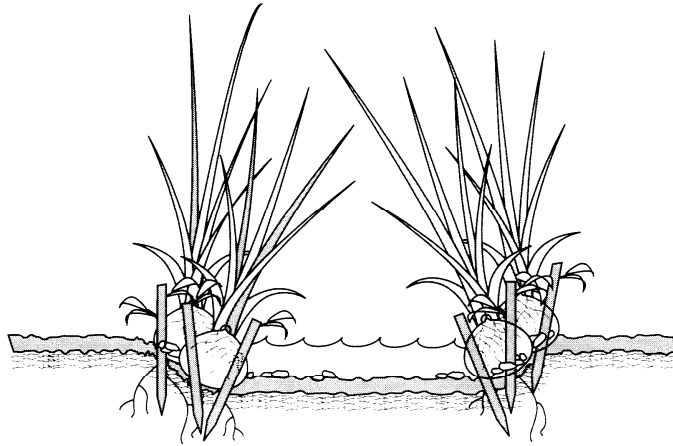
### EXAMPLE 2

Burlap is pulled snugly around the plants and secured by twine wrapped around the roll, or by hog rings holding the edges together.

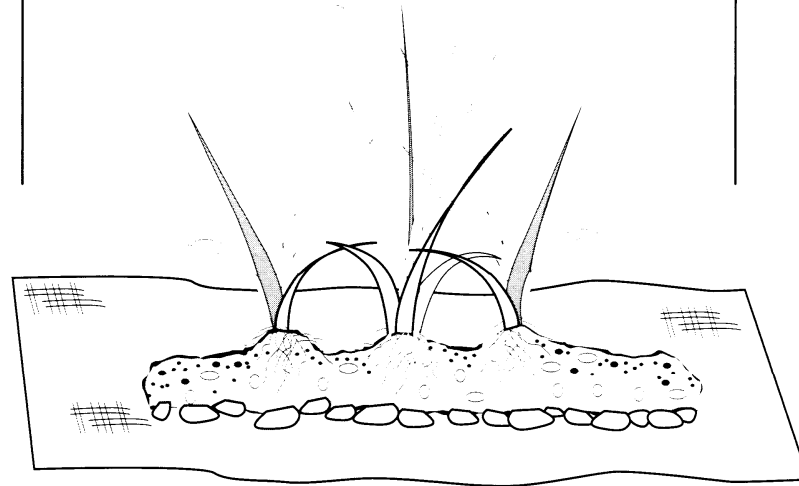
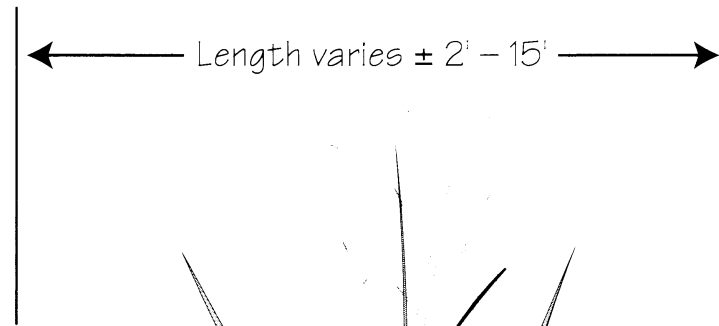


# PLANT ROLL

(Not to scale)



Section View



*Option:*  
Rocks can be placed  
on the burlap to add weight  
to the roll.

## PLANT ROLL: CONSTRUCTION

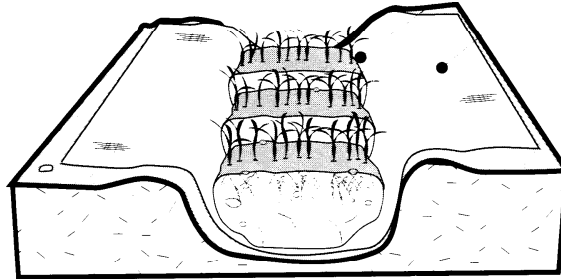
*(Not to scale)*

### STEP 1

A. Line trench with burlap

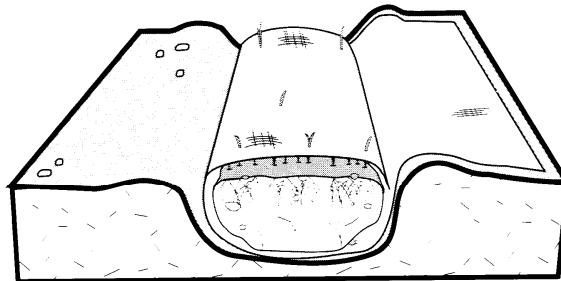
Burlap should be open-weave variety so shoots can grow through fabric

B. Fill with grass clumps



### STEP 2

A. Fold burlap over grass clumps;  
Clumps should be snug against one another



### STEP 3

Cut holes along top for plant growth;  
pull shoots through wrap

