




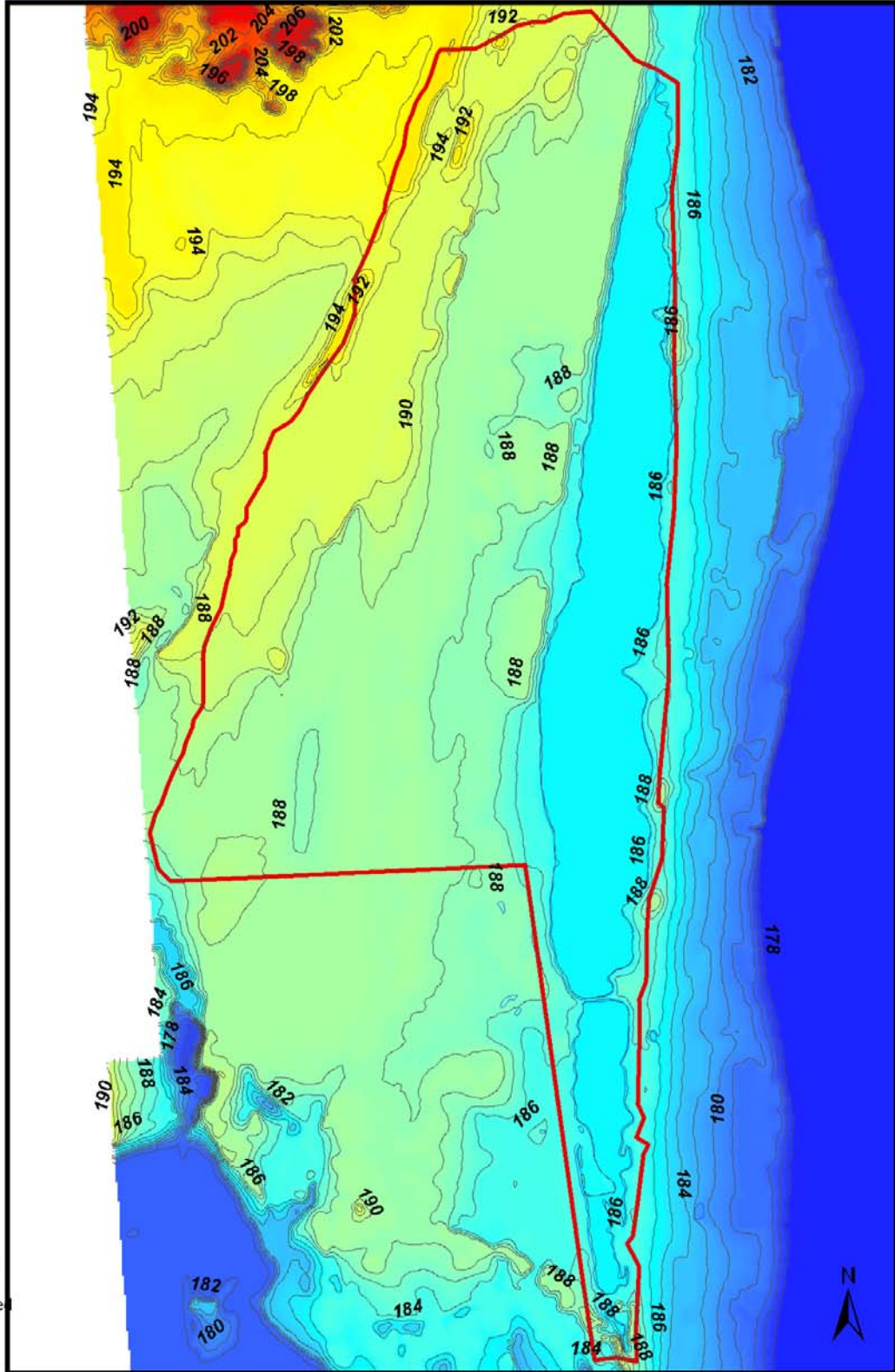


Cedar Lake Watershed

Topography

Cedar Lake topography is displayed on this map with contour lines and coloring. Less than 10 feet separate high and low elevations within the watershed.

-  Cedar Lake Watershed
-  Contours - 1m interval
- National Elevation Dataset (in feet)**
-  High : 772.9
-  Low : 576.7
-  Cedar Lake



Source data: National Elevation Dataset (10 meters resolution) downloaded from the Geospatial Data Gateway. (<http://datagateway.nrcs.usda.gov/NextPage.aspx>)

0 0.150.3 0.6 0.9 Miles

DRAFT



KIESER & ASSOCIATES
ENVIRONMENTAL SCIENCE & ENGINEERING