






# Cedar Lake Watershed

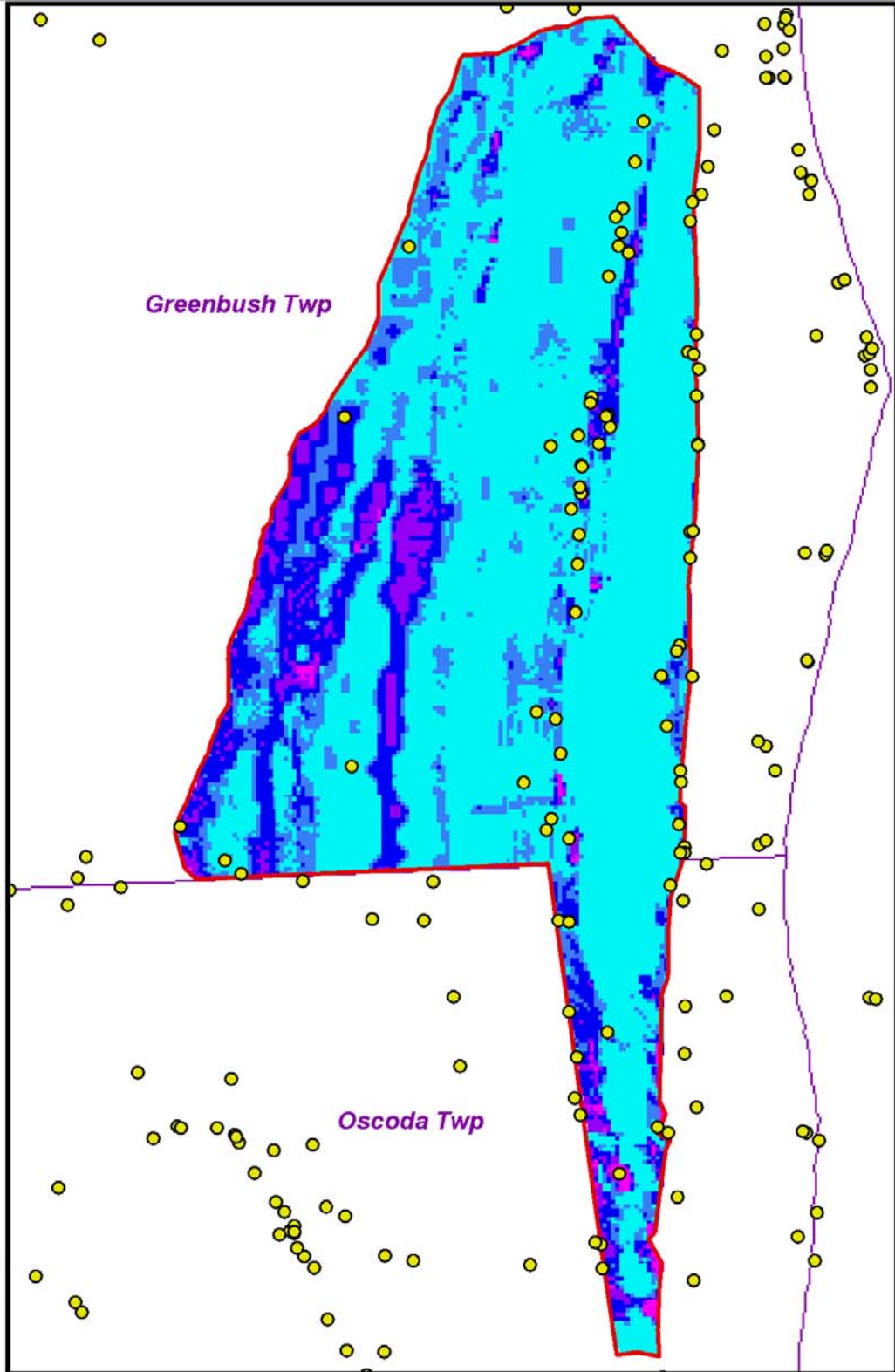
# Depth to Water Table

Understanding connections between groundwater and surface water will be important when addressing watershed concerns and issues.

-  Township
-  Drinking Water Wells
-  Cedar Lake Watershed

### Depth to water table (in feet)

-  -6 - 0
-  0 - 1
-  1.1 - 3
-  3.1 - 5
-  5.1 - 13



Source data: Base geographic GIS layers were downloaded from the Michigan Geographic Data Library (<http://www.mcgl.state.mi.us/mgdl/>)



# DRAFT



**KIESER ASSOCIATES**  
ENVIRONMENTAL SCIENCE & ENGINEERING